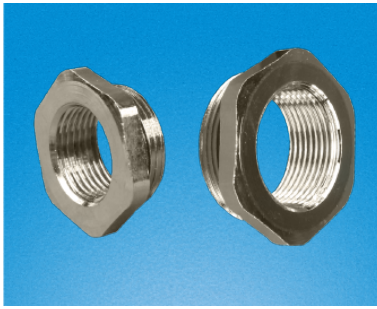
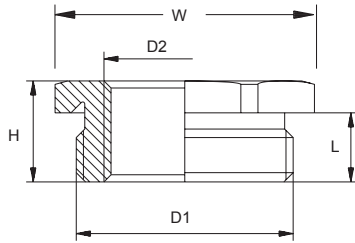


RCCN 日成REM型金属缩减转接头 Reduction Metal Fittings



螺牙规格:公制(Metric)-德制PG. Thread:Metric.PG.NPT
美制NPT
产品材质:黄铜镀镍
工作温度:-40°C至100°C,
瞬间达120°C
颜色种类:金属色/黄色
产品特性:大螺纹外转换小螺纹内.
更多选择:可根据需要订制长度
或不同特殊型号
例:REM-M20/M32
订购型号例:REM-M16/M12
备注:不含螺母,需另订购。

Material:copper coated nickel
Operate T.: -40°C to 100°C,
short time to 120°C
Colors:silver/yellow
Features:big thread outside
transfer to small thread inside
More choice:speical length
can be produced
such as : REM-M20/M32
Order part no.:REM-M16/M12
Remarks : not included
locknut



单位/Unit:mm

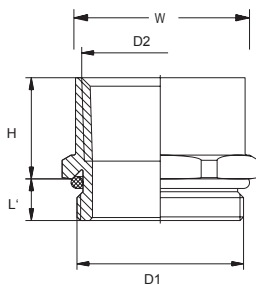
型号 Item No.	外螺纹 D1	内螺纹 D2	螺纹长度 L	高度 H	宽度 W	包装 Std.Pkg. pcs
REM-M						
REM-M16/M12	M16*1.5	M12*1.5	6.0	8.5	18	50
REM-M20/M16	M20*1.5	M16*1.5	6.5	9.0	24	50
REM-M25/M20	M25*1.5	M20*1.5	7.5	10.0	30	50
REM-M32/M25	M32*1.5	M25*1.5	8.0	11.5	39	25
REM-M40/M32	M40*1.5	M32*1.5	9.0	12.5	43	25
REM-M50/M40	M50*1.5	M40*1.5	10.0	14.0	57	10
REM-M63/M50	M63*1.5	M50*1.5	10.0	14.0	64	5
REM-P						
REM-PG9/PG7	PG9	PG7	6.0	8.5	17	50
REM-PG11/PG9	PG11	PG9	6.5	8.5	20	50
REM-PG13.5/PG11	PG13.5	PG11	6.5	9.0	22	50
REM-PG16/PG13.5	PG16	PG13.5	6.5	9.5	24	50
REM-PG21/PG16	PG21	PG16	7.5	10.0	30	25
REM-PG29/PG21	PG29	PG21	8.0	11.5	39	25
REM-PG36/PG29	PG36	PG29	9.0	12.5	50	25
REM-PG42/PG36	PG42	PG36	10.0	14	57	10
REM-PG48/PG42	PG48	PG42	10.0	14	64	5
REM-N						
REM-NPT12/NPT38	NPT1/2"	NPT3/8"	6.5	9.0	24	50
REM-NPT34/NPT12	NPT3/4"	NPT1/2"	7.5	10.0	30	50
REM-NPT1/NPT34	NPT 1"	NPT3/4"	8.0	11.5	39	25
REM-NPT1-1/4/NPT1	NPT1 1/4"	NPT 1"	9.0	12.5	50	10

RCCN 日成ELM型金属扩增转接头 Enlarging Metal Fittings



螺牙规格:公制(Metric)-德制PG. Thread:Metric.PG.NPT
美制NPT
产品材质:黄铜镀镍
工作温度:-40°C至100°C,
瞬间达120°C
颜色种类:金属色/黄色
产品特性:小螺纹外转换大螺纹内.
更多选择:可根据需要订制长度
或不同特殊型号
例:REM-M32/M20
订购型号例:ELM-M12/M16
备注:不含螺母,需另订购。

Material:copper coated nickel
Operate T.: -40°C to 100°C,
short time to 120°C
Colors:silver/yellow
Features:small thread outside
transfer to big thread inside
More choice:speical length
can be produced
such as : REM-M32/M20
Order part no.:ELM-M12/M16
Remarks : not included
locknut



单位/Unit:mm

型号 Item No.	外螺纹 D1	内螺纹 D2	螺纹长度 L	高度 H	宽度 W	包装 Std.Pkg. pcs
ELM-M						
ELM-M12/M16	M12*1.5	M16*1.5	6.0	8.5	19	50
ELM-M16/M20	M16*1.5	M20*1.5	6.0	8.5	23	50
ELM-M20/M25	M20*1.5	M25*1.5	6.5	9.0	28	50
ELM-M25/M32	M25*1.5	M32*1.5	7.5	20	35	25
ELM-M32/M40	M32*1.5	M40*1.5	8.0	10.0	45	25
ELM-M40/M50	M40*1.5	M50*1.5	9.0	12.5	55	5
ELM-M50/M63	M50*1.5	M63*1.5	10.0	14	67	5
ELM-P						
ELM-PG7/PG9	PG7	PG9	6.0	8.5	19	50
ELM-PG9/PG11	PG9	PG11	6.0	8.5	21	50
ELM-PG11/PG13.5	PG11	PG13.5	6.5	8.5	23	50
ELM-PG13.5/PG16	PG13.5	PG16	6.5	9.0	25	25
ELM-PG16/PG21	PG16	PG21	6.5	9.5	32	25
ELM-PG21/PG29	PG21	PG29	7.5	10.0	41	10
ELM-PG29/PG36	PG29	PG36	8.0	11.5	52	10
ELM-PG36/PG42	PG36	PG42	9.0	12.5	58	5
ELM-PG42/PG48	PG42	PG48	10.0	14	64	5
ELM-N						
ELM-NPT38/NPT12	NPT3/8"	NPT1/2"	6.5	9.0	24	50
ELM-NPT12/NPT34	NPT1/2"	NPT3/4"	6.5	9.0	29	25
ELM-NPT34/NPT1	NPT3/4"	NPT 1"	7.5	10.0	36	10
ELM-NPT1/NPT1-1/4	NPT 1"	NPT1 1/4"	8.0	11.5	46	10